

MAXIM

LANTRONIX

CUSTOM

Panasonic

Melexis

enfora

VAC
VACUUMSCHMELZE

SOKYMAT

TERIDIAN
SEMICONDUCTOR CORP
A FORMER TOSHIBA COMPANY

iButton®
Touch the Future!

HID

bel

SignalQuest™
Parsippany, NJ

telegesis

SKYWORKS

ember

NDK
Crystal. Bridge to the Future.

GainSpan

LM TECHNOLOGIES
INNOVATIVE TECHNOLOGY PRODUCTS

antenna³

Unique identification and information about a person or object



The MAX66140 combines 1024 bits of user EEPROM with secure hash algorithm (SHA-1) challenge-and-response authentication (ISO/IEC 10118-3 SHA-1), a 64-bit unique identifier (UID), one 64-bit secret, and a 13.56MHz ISO 15693 RF interface in a plastic key fob.

The memory is organized as 16 blocks of 8 bytes plus three more blocks—one for the secret and two for data and control registers. Except for the secret, each block has a user-readable write-cycle counter. Four adjacent user EEPROM blocks form a memory page (pages 0 to 3).

The integrated SHA-1 engine provides a Message Authentication Code (MAC) using data from the EEPROM of the device and the 64-bit secret to guarantee secure, symmetric authentication for both reading and writing to the device.

Read more at [Maxim](#)

Calvus Penta-band SMD Antenna



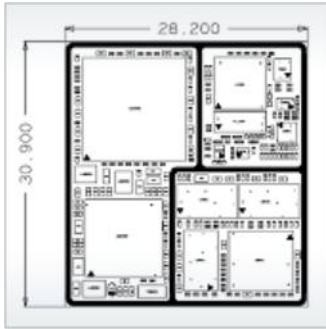
High performing standard cellular SMD antenna

Calvus A10340 penta-band antenna is a surface mountable version of Antenna's popular Flavus snap-in cellular antenna suitable for GSM, GPRS and UMTS applications and also covers the GSM850/900/1800/1900 and WCDMA frequencies.

Calvus is a very compact 27 x 8 x 3.2 mm³ size antenna intended for surface mounting and requires minimal ground plane to operate efficiently. Calvus is suitable for an extensive range of embedded cellular applications such femto base stations, vehicle tracking, remote monitoring and other M2M applications.

Read more at [Antenna](#)

Enfora Enabler HS1000 HSDPA Modem



The Enabler HS 1000 LGA modem is designed for use in a variety of host units, enabling the host platform to perform wireless data communications. The module is a very compact, high performance design, yet it is easy to interface into the final product. Enabler IIIU HSPA has the following highlights, a speed of 10.1 Mbps down, 5.8 Mbps up, a small form factor being 31 x 29 x 2.7mm. There is an extended temp range (-30 to +85C) and reliable 90 pin LGA package.

The key capabilities for the module and associated features of the platform are:

- 2G
- 3G
- AUDIO
- SECURITY
- CONNECTIVITY
- POWER CONSUMPTION

ETRX3 ZigBee Module; Our most advanced family of ZigBee Modules



The ETRX3 series is the 3rd generation of advanced ZigBee modules from Telegesis and the first module family on the market to feature the EM357 and EM351- the latest ARM® Cortex M-3 SOC's from Ember.

ETRX3 series module features:

- EM300 series ZigBee SOC featuring 32-bit ARM® Cortex-M3 processor
 - Dimensions 19mm x 25 mm x 3 mm
 - Up to 192k of Flash, 12k of RAM
 - Estimated RX Sensitivity -99dBm (-100dBm Boost)
 - Estimated TX Power 3dBm (5dBm Boost)
 - 105dB link Budget
- Est Current Consumption: 20% better compared to ETRX2
 - 128µS Wakeup • Improved Hardware MAC Acceleration
 - JTAG Interface for Programming and Debugging
 - Improved Peripherals (ADC, timers etc.)
 - Chip Antenna and U.FL coaxial Connector
 - FCC Approval, tested for European Regulations

Read more at [Telegesis](#)



Advantages of Internet Protocol (IP) Cameras and H.264 Compression for Security and Surveillance Video
[Read more here.](#)

This application note discusses the advantages Internet protocol (IP) cameras have in security and surveillance video systems over analog cameras. Unlike their predecessors, IP cameras support high-definition (HD) images, local data storage, video analytics, and remote control functionality. The application note also details the benefits of using H.264 video compression technology for IP camera networks, and presents Maxim's Mobicam3 IP camera reference design kit.



www.cstelectronics.co.za